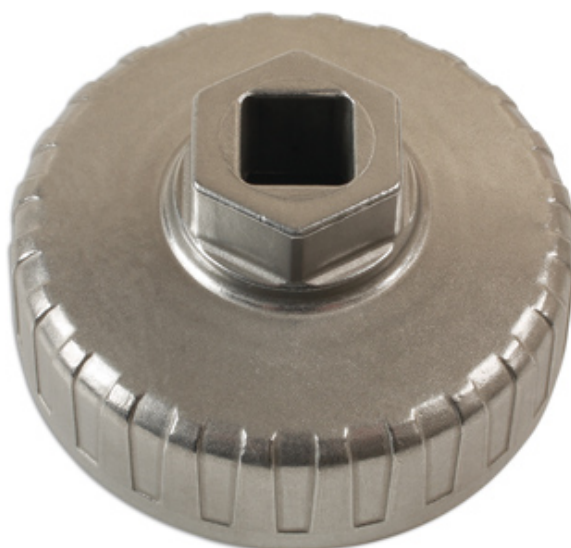


## Oil Filter Wrench 1/2"D - 67mm x 14 Flutes

A cup style oil filter wrench suitable for use on Hyundai & Kia 1.0, 1.1, 1.2, 1.3, 1.4L engine ranges, removes filters without damage to the filter housing.



### Additional Information

- Hyundai applications include: Amica, Getz, i10, i20.
- Kia applications include: Carens, Cee'd, Picanto, Rio.
- Size: 67mm x 14 flutes x 1/2"D / 26mm Hex drive options.
- Designed specifically to fit OEM filter 26300-02502.
- Manufactured from aluminium, which reduces the chance of damage to the housing whilst still allowing it to withstand the additional torque required in loosening filters if stubborn or previously overtightened.

<http://lasertools.co.uk/product/7258>

